

Frequently Asked Questions

For Families & Caregivers - Learn more about the Portrait of a Nevada Learner

What is the Portrait of a Nevada Learner?

The Portrait of a Nevada Learner is a shared vision that describes the mindsets and skills students need to succeed in school, work, and life. It's built around four key areas: EMPOWERING, CONNECTING, IMPACTING, and THRIVING. Each one invites students to reflect on important questions: How will I grow in my learning? How will I build and sustain relationships? How will I contribute to make an impact? How will I thrive? Together, these guide schools, families, and communities in supporting students to become confident, capable, and ready for the future.

Who helped create the Portrait?

Students, educators, and community partners from across Nevada shared their voices and ideas. Their input shaped a statewide vision that genuinely reflects the hopes and strengths of Nevada's communities.

How can families and caregivers support the Portrait at home?

Families and caregivers play an essential role in helping students grow in the Portrait domains. You can:

- Model Portrait skills by showing curiosity, problem-solving, and resilience in everyday situations.
- Create opportunities for practice by inviting your child to help plan a family activity, solve a real-life problem, or collaborate on a household project.
- Connect learning to life by asking questions like, "How did you work through that challenge?" and then discussing strategies together.
- Celebrate growth, not perfection—recognize effort, persistence, and progress over time.
- Encourage reflection by helping your child set goals and think about how they can build relationships, make an impact, and thrive in different settings.

What does the Portrait mean for my child's future?

It means your child is learning to think critically, communicate clearly, and adapt with confidence. These lifelong skills will help them thrive in whatever path they choose after graduation.

Why was the Portrait created?

The Portrait was created so that learning in Nevada reflects what matters most for our young people today and in the future. It helps schools, families, caregivers, and communities work together to prepare students for lifelong learning and meaningful contributions.

How do schools know if students are growing in these areas?

Growth is shown through everyday learning, not just one score or test. Teachers and students use Portrait-aligned competencies, rubrics, and examples of work to

- reflect on progress
- set goals
- celebrate growth over time

How does it help Nevada students?

The Portrait helps your child understand how they learn and who they are becoming, not just what they know. It encourages curiosity, confidence, and reflection so each student can take ownership of their growth and learning journey.

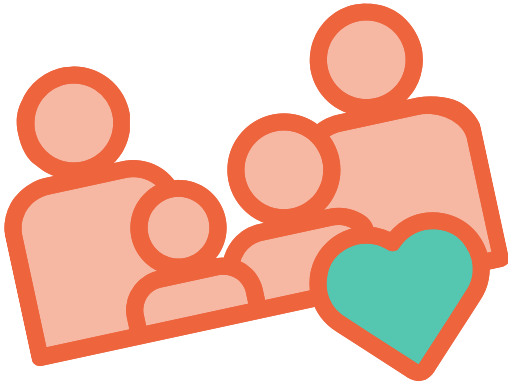
Will this change what my child learns?

It doesn't replace what students learn. It enhances how they learn. Teachers use the Portrait to design lessons that connect academic content with real-life skills such as problem-solving, communication, and collaboration.

SIX

ways to make the Portrait come alive **A Guide for Families and Caregivers**

The Portrait of a Nevada Learner is a shared commitment to helping every student discover their strengths and build the future they imagine. When schools, families, and communities work together, students grow with confidence and purpose.



Families are children’s first teachers, and home is where essential skills like resilience, communication, and curiosity take root through everyday moments and conversations.

By actively engaging with the Portrait at home, families and caregivers aren’t just supporting schoolwork, they’re partnering in developing the social-emotional learning and life skills that matter most for success now and in the future.



**Check the next page for ideas that guide
caregivers in supporting students.**



Identify a Weekly Focus Domain

Make space and time to discuss what each domain from the Portrait of a Learner means and why it is important.



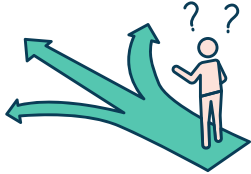
Establish Bounce Back Talks

Encourage students to share stories of overcoming challenges during the week. Share your own experiences to model resilience.



Model Empathy Actions

Help learners connect with others in the community or support them in starting a group focused on shared interests and relationships.



Extend Decision-Making

Foster empowerment by inviting participation in daily decisions (e.g., planning meals or choosing weekend activities).



Encourage Collaborative Circles

Look for opportunities to volunteer together to practice empathy and service (e.g., at the local library, food pantry, or community center). Create spaces for friends or siblings to help each other with homework, or encourage forming a homework club with a friend group.



Celebrate Growth

Center conversations on effort, progress, and learning. Ask reflective questions like, “What new strategy did you try today?” or “What are you most proud of about your effort?” to build a growth mindset.



Bonus: Partnership Matters

You can support your school's portrait implementation by:

- Reaching out to your child’s teacher or school counselor to learn more about how the Portrait is being integrated into classroom activities and learning experiences
- Sharing insights about learners’ strengths, interests, and needs in relation to developing Portrait competencies and skills
- Checking newsletters or district communication channels for Portrait updates.

Frequently Asked Questions

For Community Partners - Learn more about the Portrait of a Nevada Learner

What is the Portrait of a Nevada Learner?

The Portrait of a Nevada Learner is a shared vision that describes the mindsets and skills students need to succeed in school, work, and life. It's built around four key areas: EMPOWERING, CONNECTING, IMPACTING, and THRIVING. Each one invites students to reflect on important questions: How will I grow in my learning? How will I build and sustain relationships? How will I contribute to make an impact? How will I thrive? Together, these guide schools, families, and communities in supporting students to become confident, capable, and ready for the future.

How can my organization align with the Portrait?

Use the same language of attributes (e.g., collaboration, resilience, curiosity) in hiring, mentoring youth programs, or workplace learning. When learners hear consistent messages across school and community, the Portrait truly comes to life.

What does the Portrait mean for Nevada communities and employers?

It strengthens connections between schools and communities by preparing students with the adaptable, people-centered, and creative skills Nevada's communities and workforce need for a thriving future.

What are the benefits of partnering with schools around the Portrait?

Partnerships help students see the relevance of their learning, strengthen community connections, and build a local talent pipeline aligned with shared values.

How does the Portrait connect to the community?

The Portrait helps schools, families, and community partners speak a common language about what success looks like. It connects classroom learning with the skills needed to contribute and make a difference in Nevada's communities.

How does the Portrait connect to workforce and economic development?

It emphasizes transferable skills like collaboration, problem-solving, and initiative - traits employers say are most essential for success in any field.

How can local organizations or community members get involved?

Community partners can mentor students, serve as guest speakers, host job shadows, provide internships and other real-world learning experiences, share expertise, co-design projects, support school events, and offer feedback on local Portrait implementation. Every partnership helps learners see how Portrait skills matter in life beyond the classroom.

Four

ideas to support students in your community through partnerships

A guide for community organizations and businesses

Authentic partnerships bring the Portrait of a Nevada Learner to life one meaningful interaction at a time.

Explore a range of ways to help students build essential skills and connect learning to the broader community. Whether you begin with a bold, visionary idea or a simple interaction, each step you take demonstrates a commitment to a shared, connected future.



Big-picture ideas



Small-steps

1 Build Mentorship Opportunities



Create mentorship experiences that expand students' exposure to careers and community roles (e.g., pair staff mentors with students for one semester).



Digital Pen Pal

Provide one-time feedback on student work, highlighting Portrait skills.

3 Design Skill-Building Pathways



Create internships or projects that connect classroom learning to professional application. E.g., Partner with a school to offer project-based internships.



'Day-in-the-Life' Guest Spot

Record a brief video showing a Portrait skill you used at work and give it to a teacher to share.

2

2 Make Space for Students to Lead



Invite students into planning and decision-making so their voices shape community outcomes (e.g., Invite students to help design a community awareness campaign).



The 15-Minute Focus Group

Students give quick feedback on one idea, post, or aspect of your organization, virtual or in-person.

4

4 Establish Community-based Learning Hubs



Transform a space where students can explore interests and build Portrait skills. E.g., Host an after-school session for students.



Skills Showcase Wall

Display student work and highlight Portrait domains showing community connection matters beyond school.

See 4 more micro-steps on the next page!

Create Your Own Community-Based Learning Hub



Below you will find considerations for community hubs through bigger moves and quick starts. Take action where you can.

> Real-World Input

Why It Matters

Students grow Portrait skills by working on real issues they care about.

Take Action

BIGGER MOVE: Support youth-led projects and partner with nonprofits or community centers.

QUICK START: Community Question Board
Post one real question your organization is wrestling with (e.g., “How can we serve families better?”). Invite students to add ideas or solutions on sticky notes or a quick form.

> Role Models in Action

Why It Matters

Seeing a wide range of people and career paths helps students understand how Portrait skills are used every day in real work and life.

Take Action

BIGGER MOVE: Offer to host diverse career speakers from various backgrounds to share their stories.

QUICK START: Career Skill Spotlight
Post a photo or short video highlighting an employee’s Portrait skill.

> Open Doors and Access

Why It Matters

Removing barriers ensures every student can participate in community learning.

Take Action

BIGGER MOVE: Partner with libraries for hotspot lending.

QUICK START: Study & Charge Stations offer a quiet space with outlets and wifi during set after-school hours.

> Hands-On Evidence

Why It Matters

When students can show what they know through doing, creating, or presenting, they develop deeper understanding and practice essential Portrait skills.

Take Action

BIGGER MOVE: Invite students to pitch solutions using models, prototypes, or performances.

QUICK START: 1-Hour Pop-Up AMA
Host a monthly “Ask Me Anything” on Portrait/Workplace skill connection.